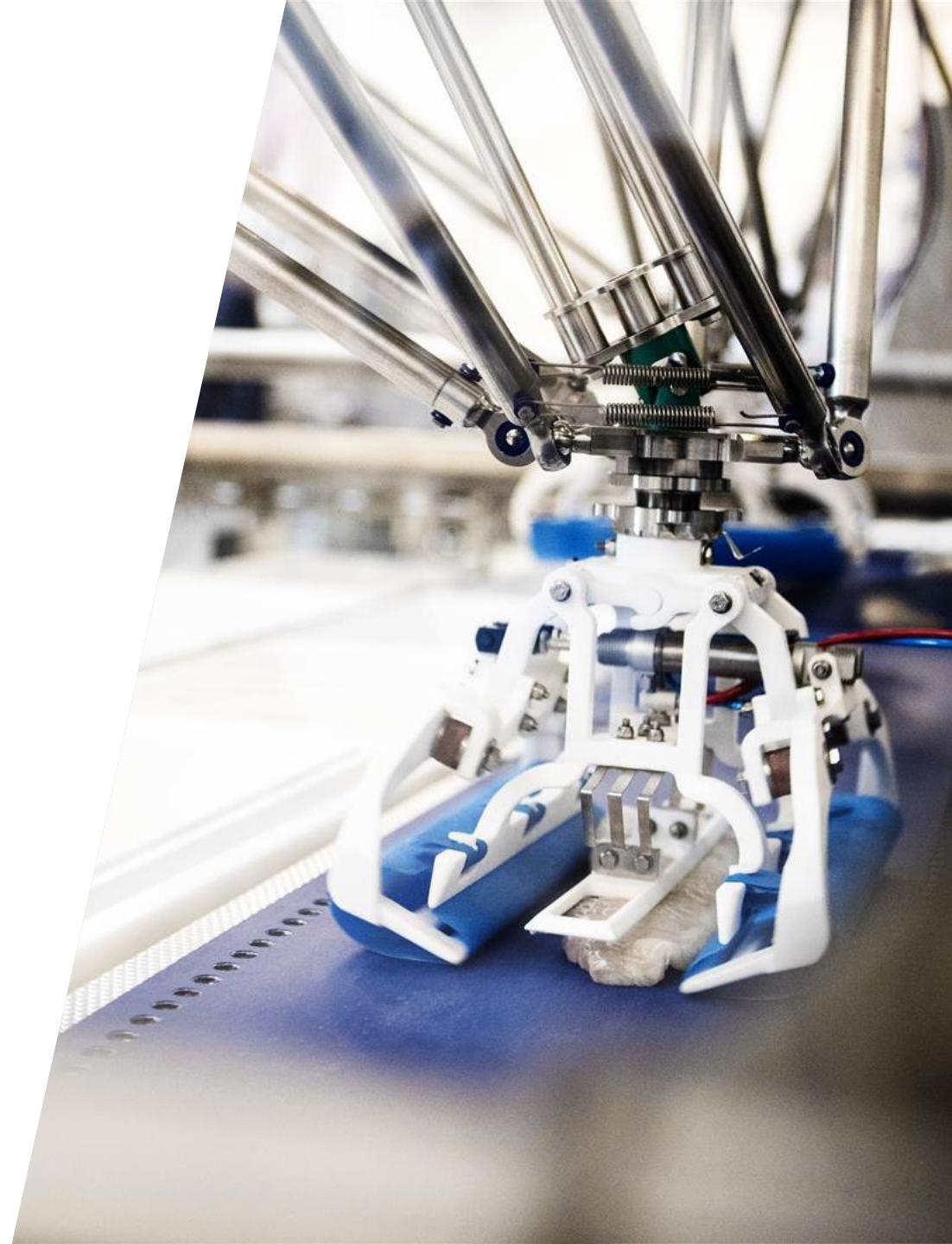




# *New Technology for Onboard Production*

Sigurður Ólason, *EVP Marel FISH*  
January 9<sup>th</sup>, 2020



# Marel at a glance



Marel is the leading global provider of advanced processing systems and services to the poultry, meat and fish industries



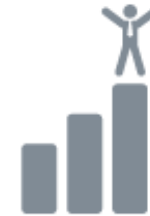
6,000+  
EMPLOYEES



30+  
COUNTRIES



100+  
PARTNERS



#1  
PROVIDER TO  
THE INDUSTRY



€1.2bn  
2018  
REVENUE



14.6% EBIT  
MARGIN  
2018

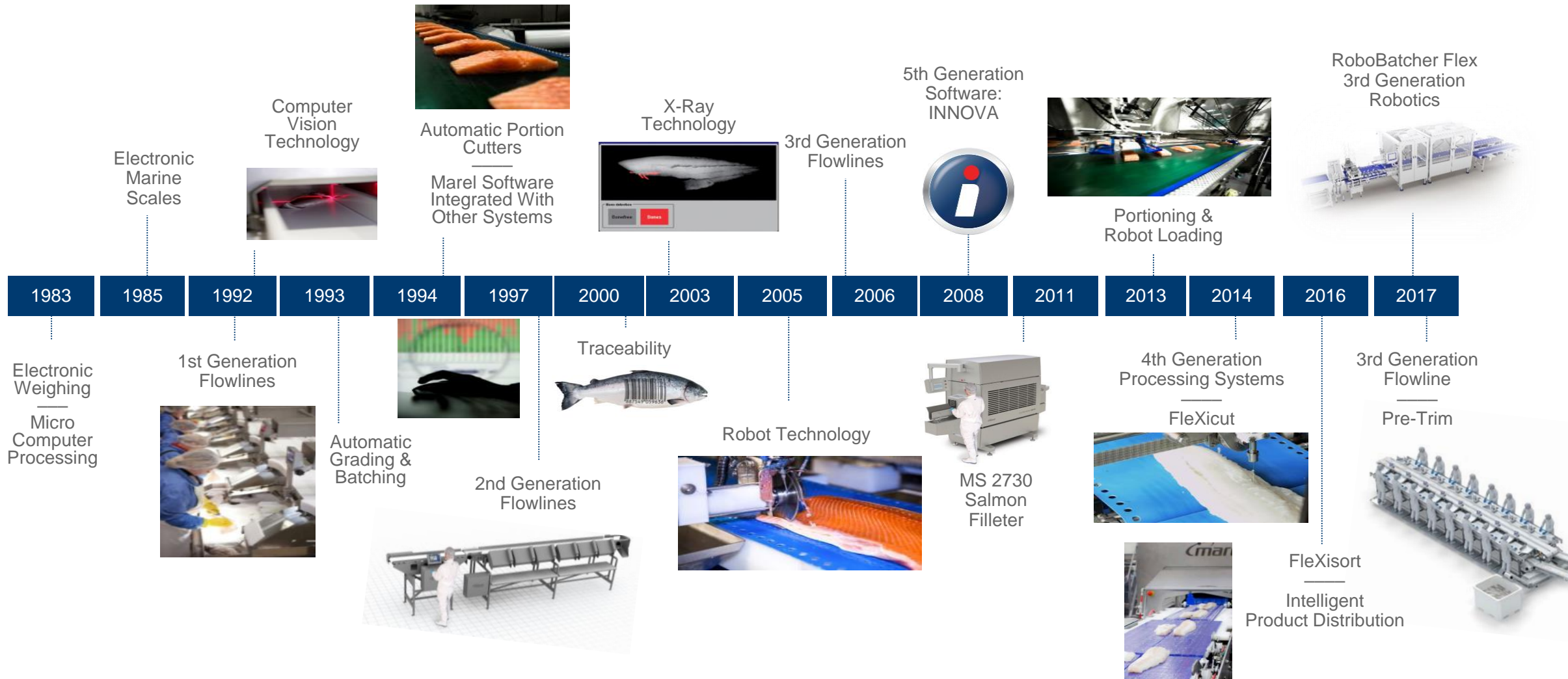
# Leading global provider of systems and services



# Marel milestones in the fish industry



Marel's fish processing systems are designed to increase and maintain the highest quality, throughput and yield possible, leading the way to improved processing efficiency





## *Vision*

*In **partnership** with our customers we are **transforming** the way fish is processed.*

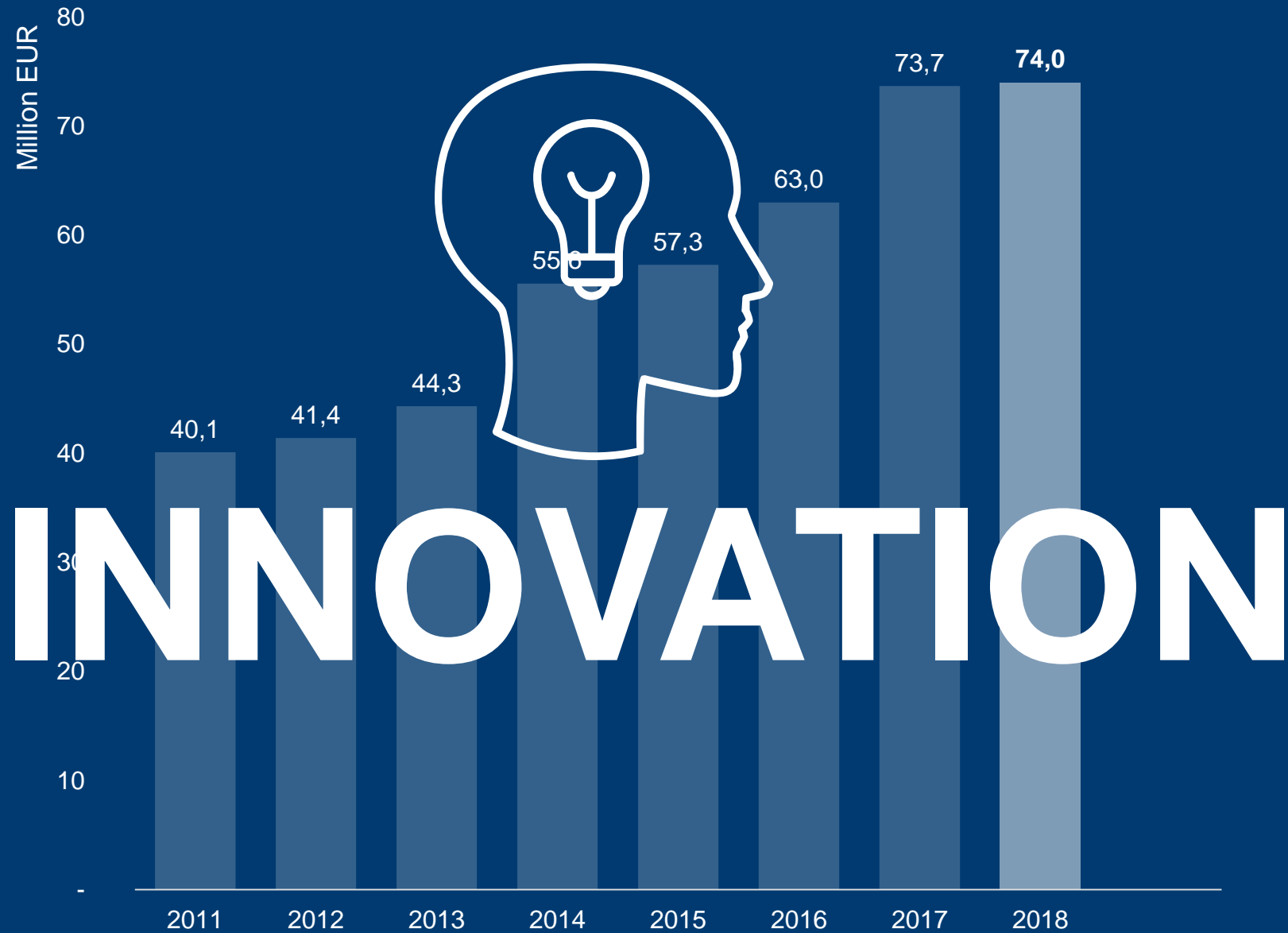
*Our **vision** is of a world where quality food is produced **sustainably** and **affordably**.*

UNITY

EXCELLENCE

INNOVATION





# UNITED NATIONS SUSTAINABLE DEVELOPMENT GOALS



## SUSTAINABILITY

*“ MEETING THE NEEDS OF THE PRESENT WITHOUT COMPROMISING THE ABILITY OF FUTURE GENERATIONS TO MEET THEIR OWN NEEDS. ”*

BRUNDTLAND COMMISSION



# STANDARD EQUIPMENT

---

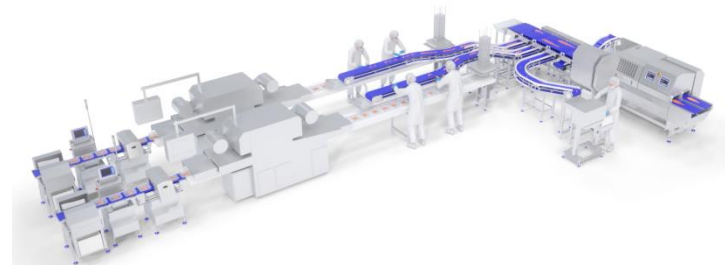
Marel has a strong portfolio of standard equipment and solutions



# FULL-LINE SOLUTIONS

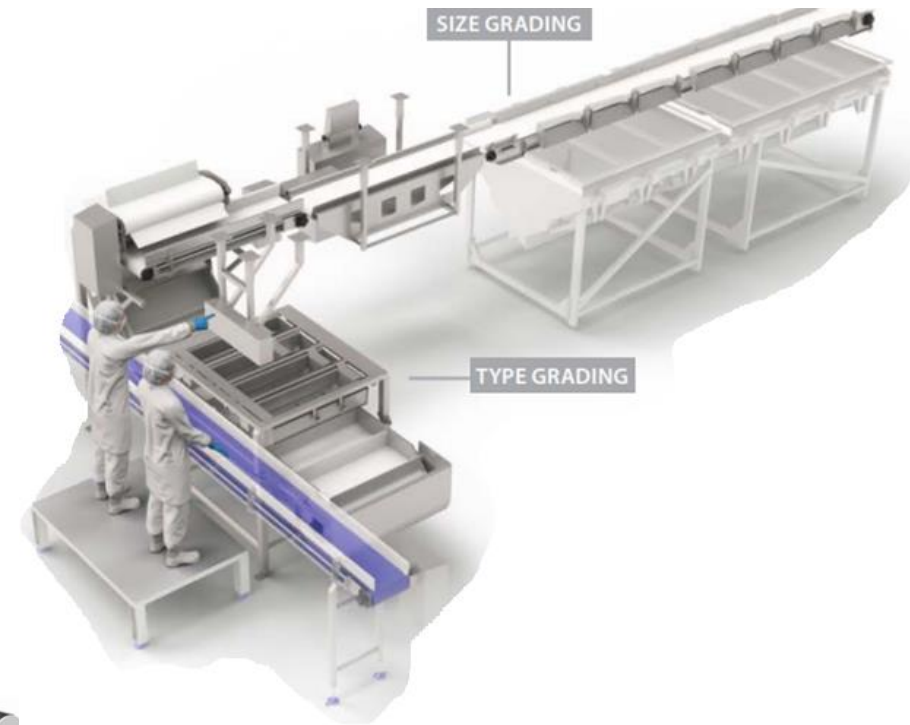
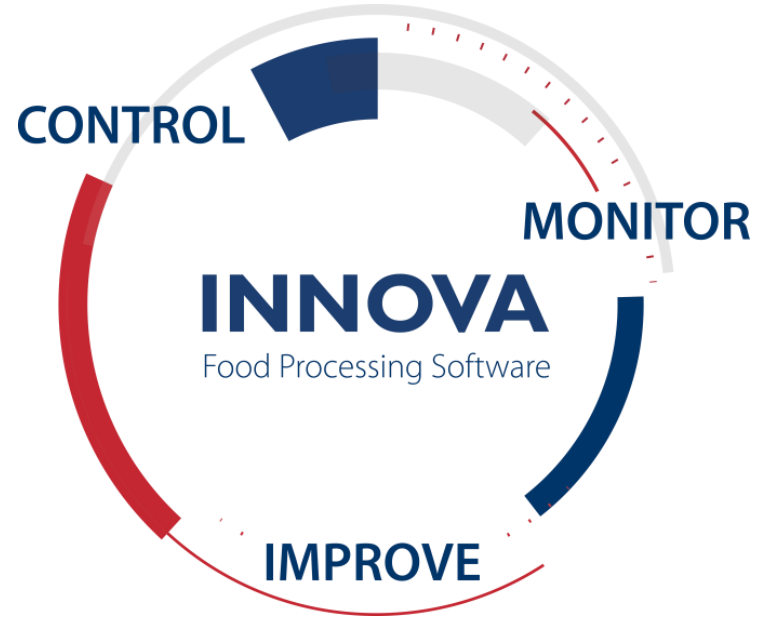
---

Marel delivers advanced processing solutions to the industry ranging from small solutions to full-line greenfield projects

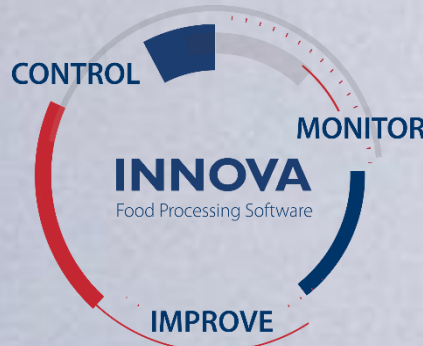




# Today's onboard portfolio



# Innova Marine – Intelligent production control



# Innova onboard packing system



Designed to meet the requirements of the marine sector

## Connection to Marine devices



GRADERS



MOBILE  
COMPUTING



M1100 SCALES



SPEED BATCHER



HOPPERS



PACKING  
STATIONS



M3000



TOUCH SCREENS



M2200

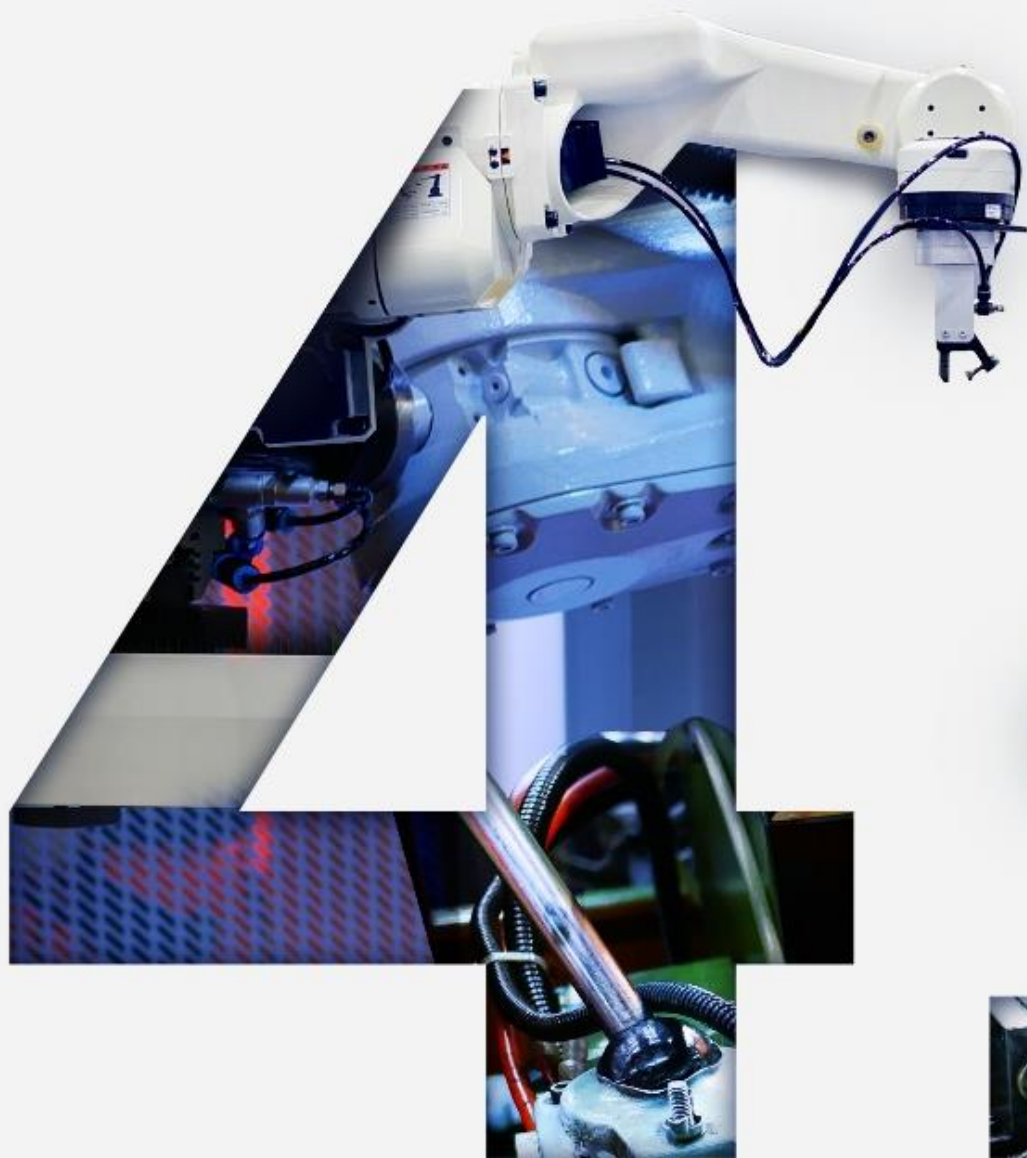


PRINTING

- User friendly registration terminals
- Manages both trips and hauls
- Easy reporting and label design
- Full Traceability
- QC System
- Connection to GPS devices
- Master data management with other ships and plants (SIF report)

Curio - *our newest family member*





# Industry 4.0



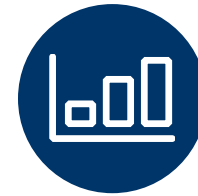
CLOUD



AI / MACHINE  
LEARNING



SOFTWARE  
INTEGRATION



BIG DATA &  
ANALYTICS



INTERNET OF  
THINGS



SENSORS AND  
PREDICTIVE  
MAINTAINANCE



DATA DRIVEN  
QUALITY  
CONTROL



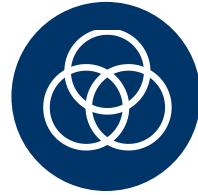
SMART SUPPLY  
NETWORK



AUTONOMOUS  
ROBOTS



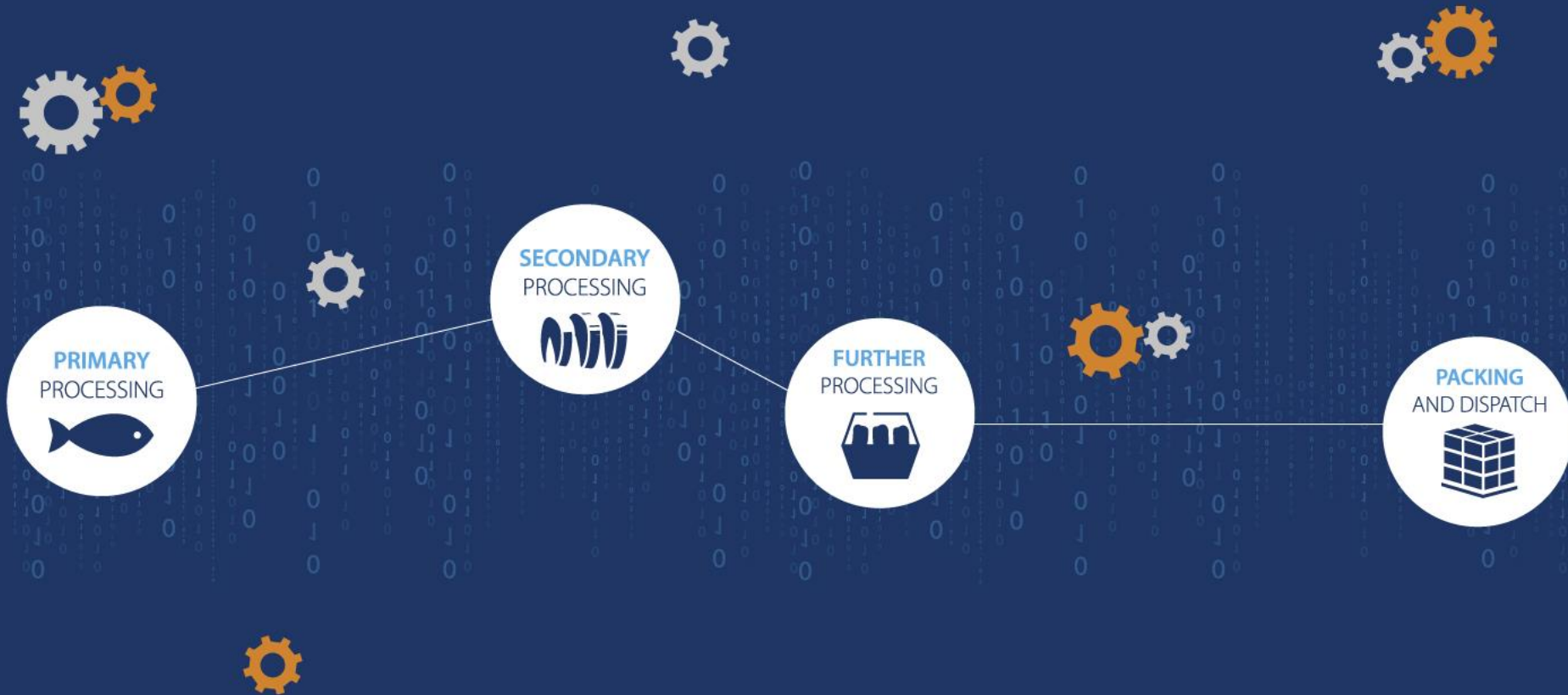
VIRTUAL /  
AUGMENTED  
REALITY

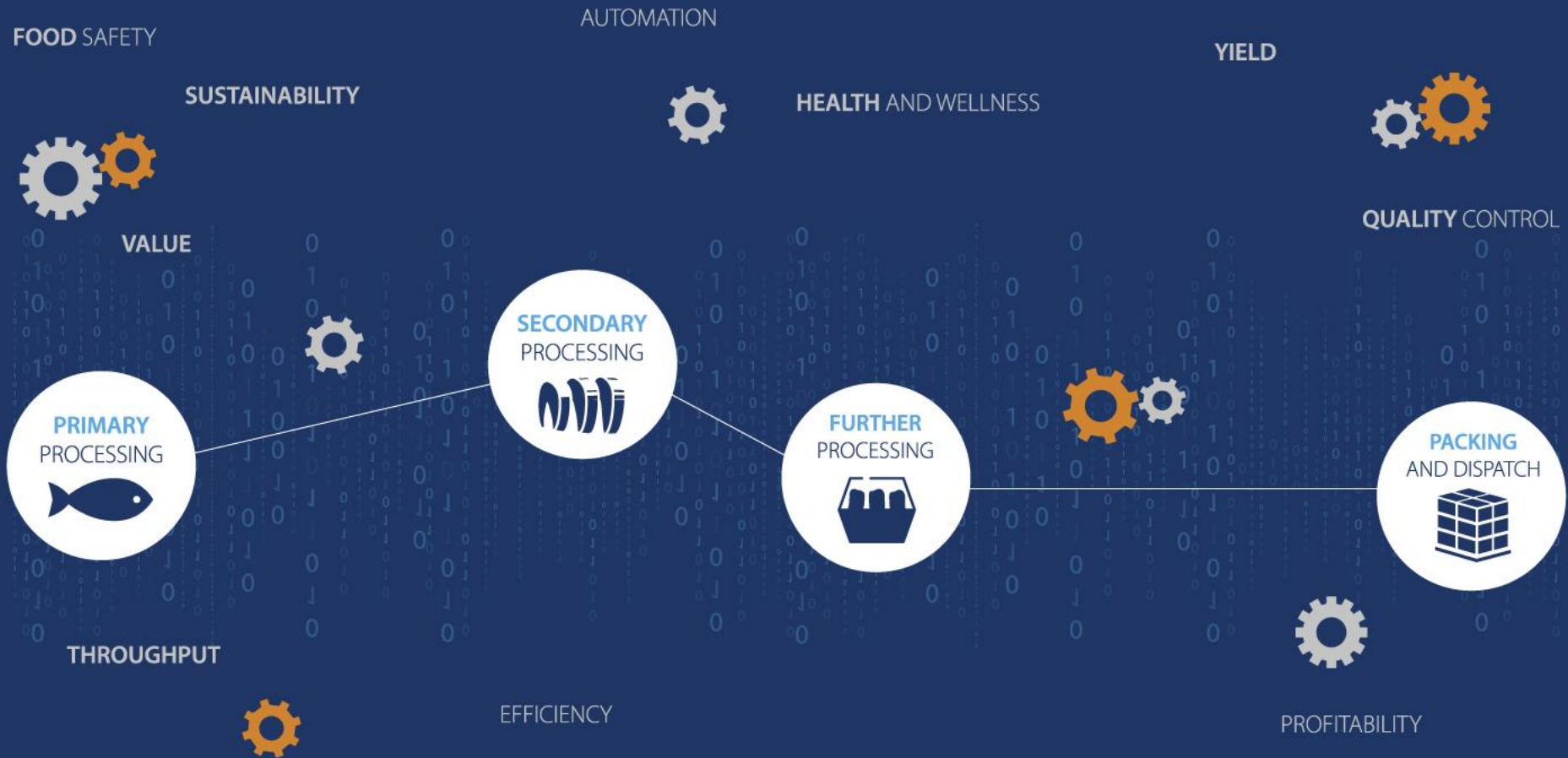


SIMULATION



3D PRINTING

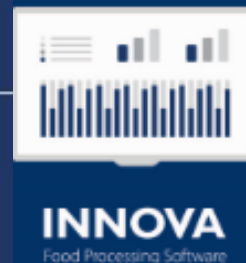






# SMARTER PROCESSING

ARE YOU READY?



# Marel is investing in Digital

To deliver on the **Digital** vision

- Marel **doubled** the Software R&D investment in 2018
- and we are **increasing** our investment in coming years

Focus on **infrastructure, big data,** and **artificial intelligence.**

Marel has added a new **Software Development Center** in Seattle.

# The Entrance of Robotics into the Food Processing Sector



**Robots**



=

**Vision**



+

**Intelligence**

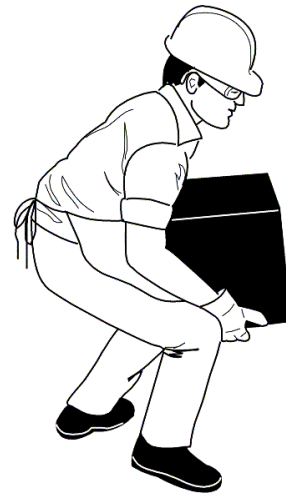


+

**Action**



# What drives the need for Robotics?



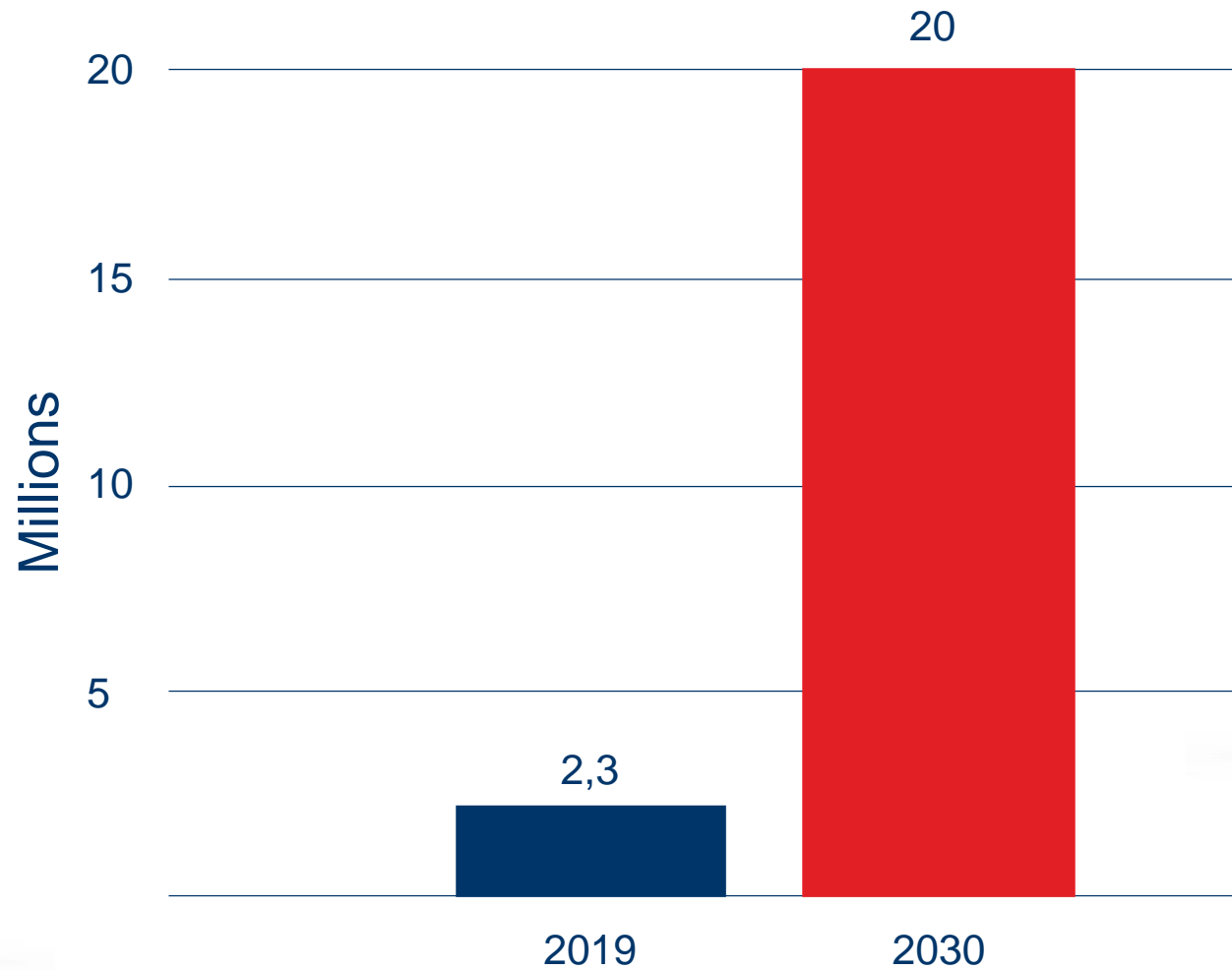
LABOUR SCARCITY

MONOTONOUS AND HARD JOBS

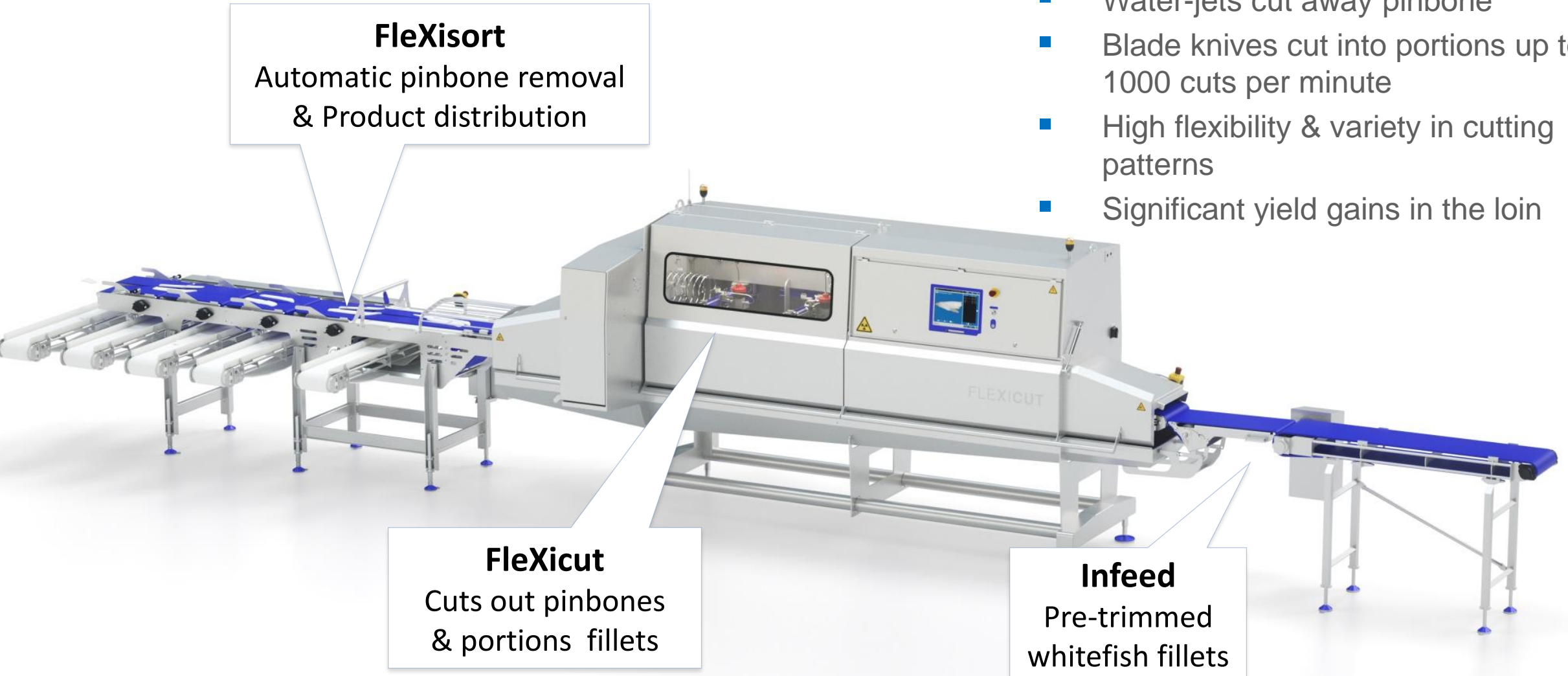
FOOD SAFETY

YIELD AND EFFICIENCY

# Robots are Changing the World



# FleXicut and FleXisort



**FleXisort**  
Automatic pinbone removal  
& Product distribution

**FleXicut**  
Cuts out pinbones  
& portions fillets

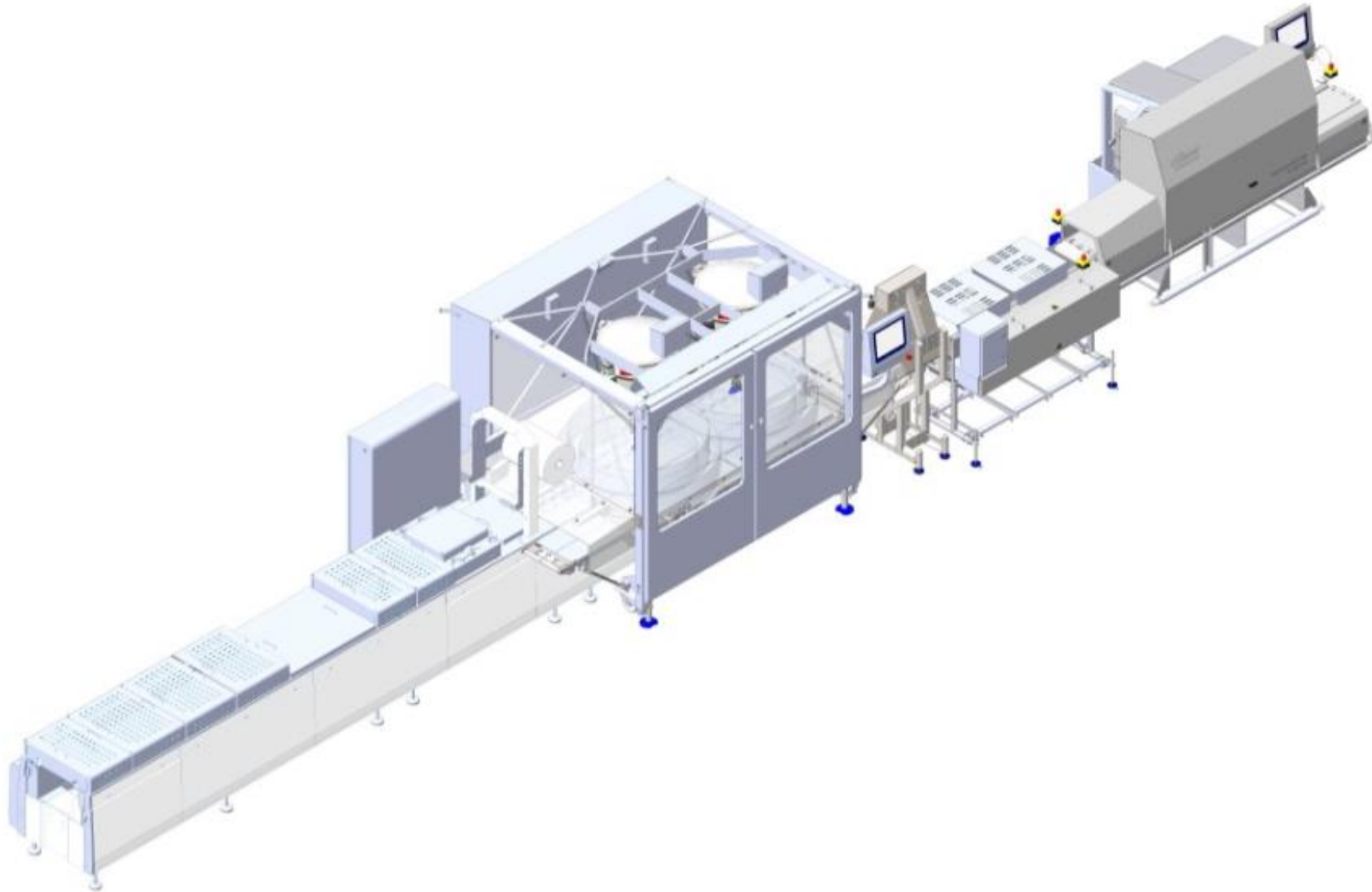
**Infeed**  
Pre-trimmed  
whitefish fillets

- Capacity: 0,42 m/sek (1,4 ft/sek)
- High-precision X-ray bone detection
- Water-jets cut away pinbone
- Blade knives cut into portions up to 1000 cuts per minute
- High flexibility & variety in cutting patterns
- Significant yield gains in the loin

# FleXicut Onboard



# RoboBatching – *batching into Thermoformer*





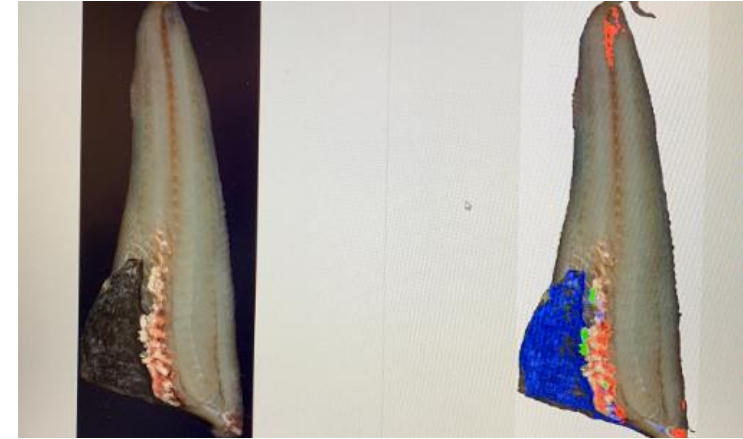
# RoboBatching – *batching into boxes*



# RoboBatching – *batching into boxes*



# Automatic QC of fillets using machine learning



- Developed for visual quality control
- Weight estimation
- Grading based on certain parameters
- Active feedback to Filleting machines
- 100% quality documentation



*Exciting times ahead*



**„THE BEST WAY TO  
PREDICT THE FUTURE  
IS TO CREATE IT“**

---

*Peter Drucker*



# LETS CREATE THE FUTURE - *TOGETHER*

---

and transform the way food is processed



THANK YOU!

