



LONGLINING
Ombordfryst 2019
Lasse Rindahl, Mustad Autoline

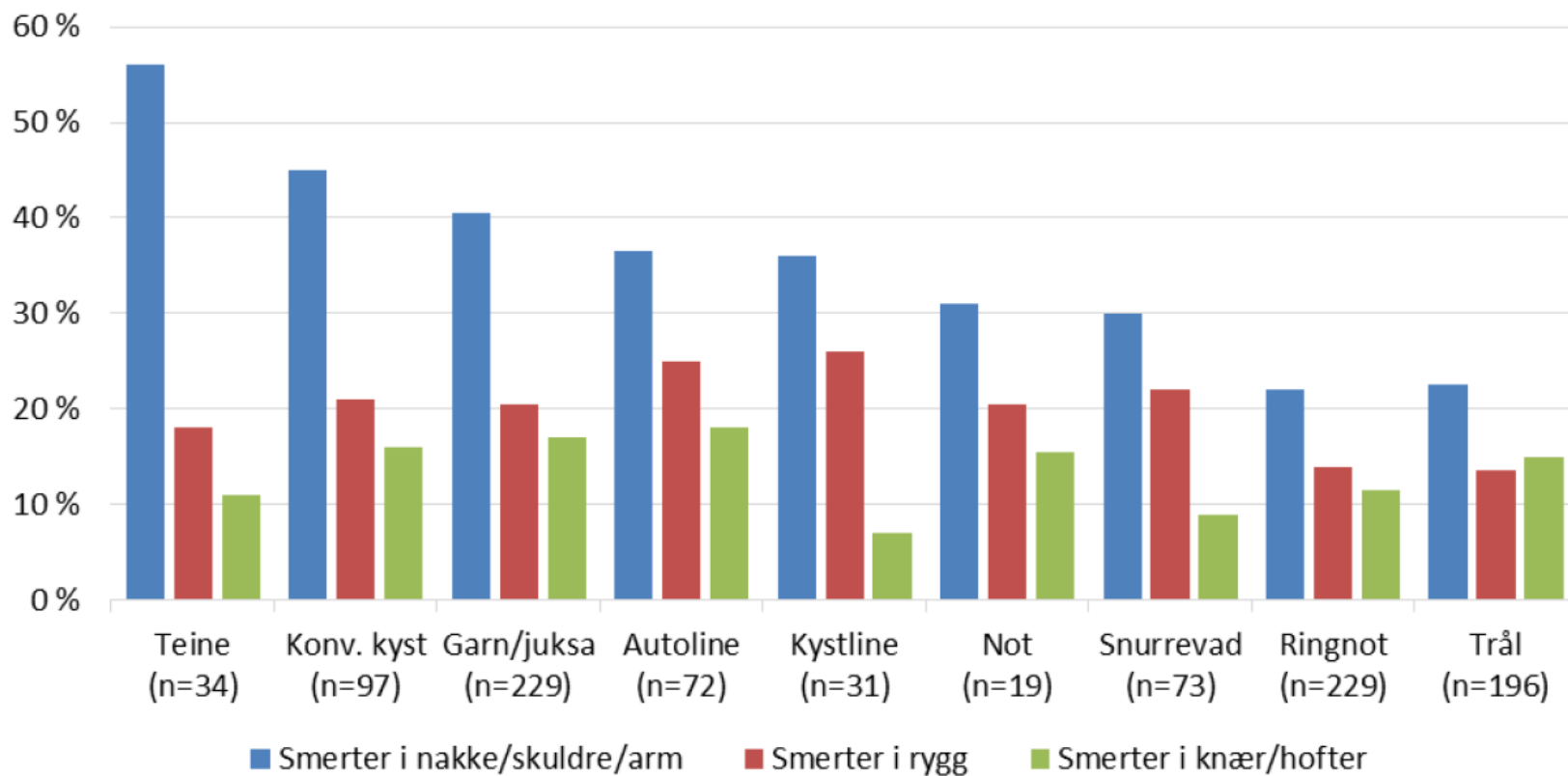
Innledning

- Renomè
- Miljø
- Marked
- Teknologi

Renommé

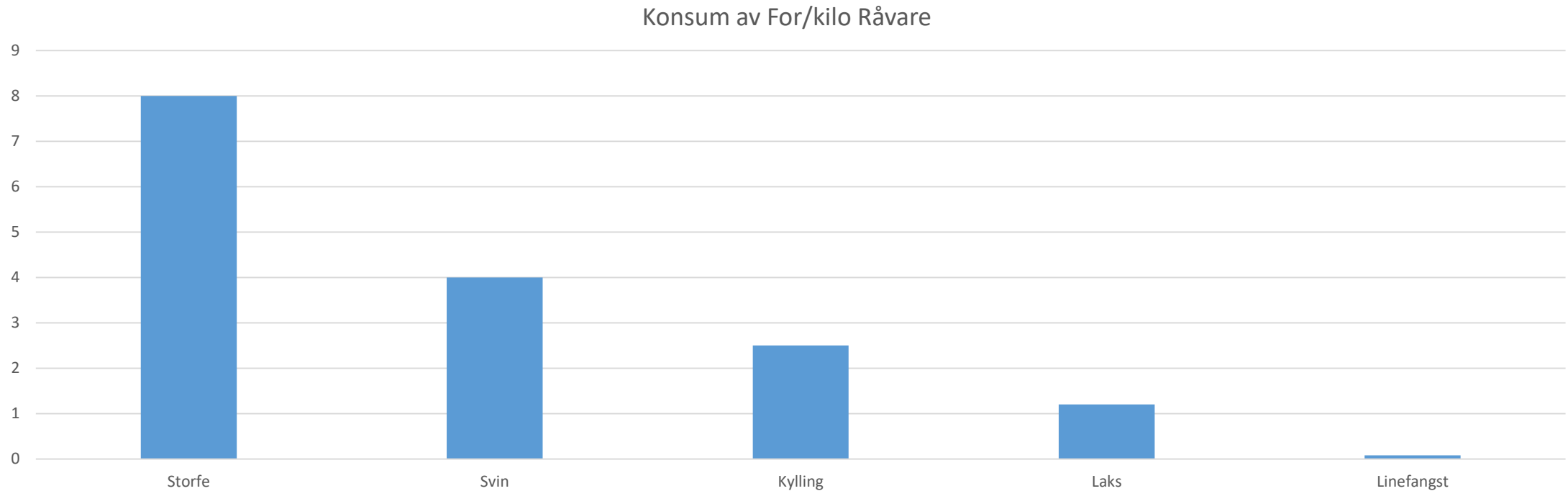
- Tungt arbeid
- Konsumfisk til agn
- Miljøvennlig
- Kvalitetsorientert
- Konservativt

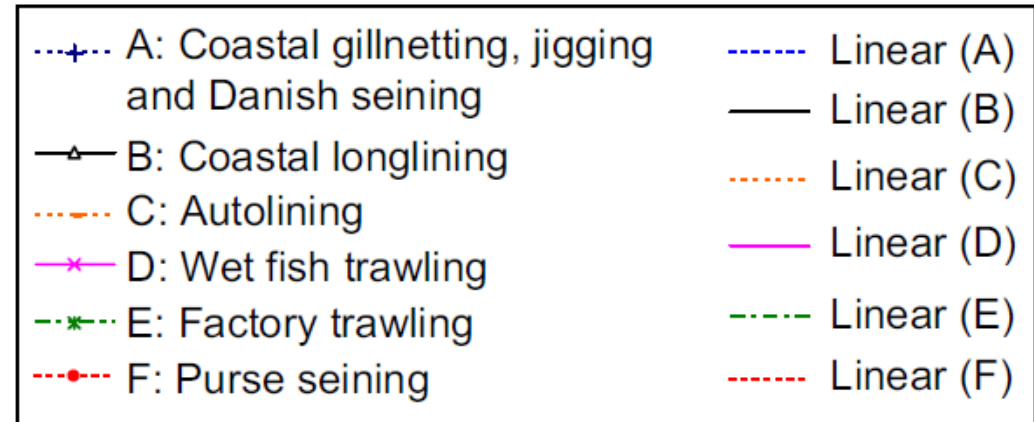
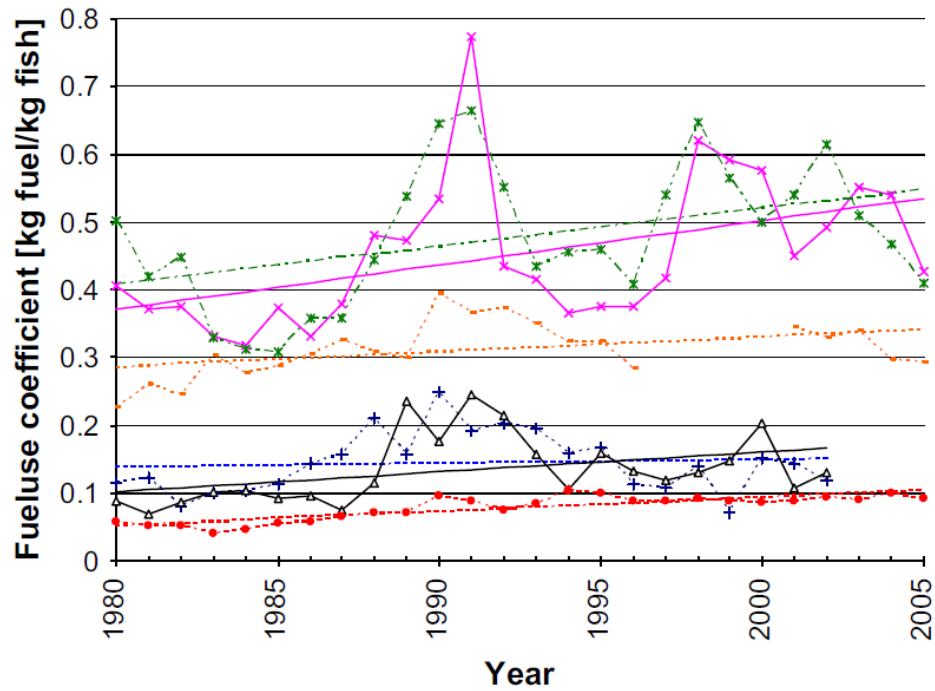
Respondenter med betydelige plager



Thorvaldsen, Sønvisen et Al. 2016

Er det etisk problematikk rundt å bruke agn som innsatsfaktor?

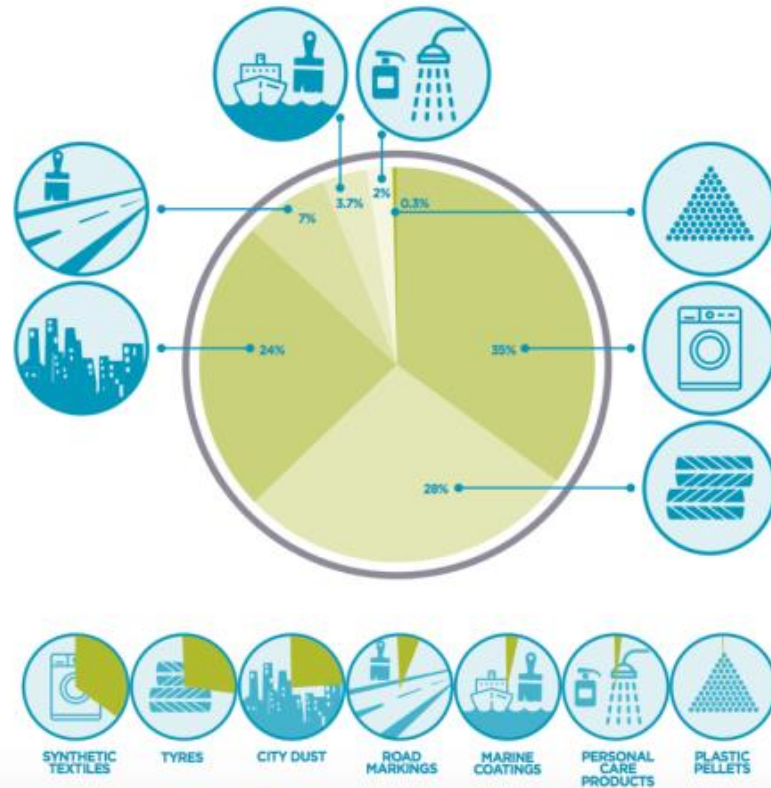




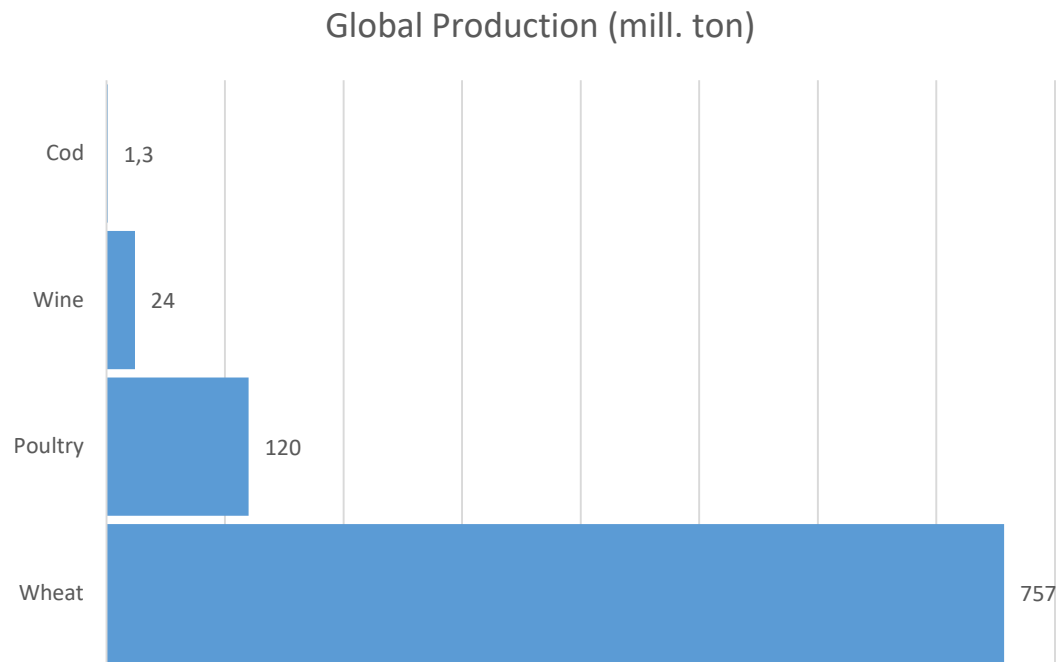
Andre miljøfaktorer med kommersiell betydning

GLOBAL RELEASES OF PRIMARY MICROPLASTICS TO THE WORLD OCEANS

BY SOURCE (IN %).



Kan torskene mette verden?



LET YOURSELF BE CAUGHT UP IN FISHING...

Cod fish

Pearly cooked with seaweed

The lead: Melted sea potatoes and "kokotxas" cod cheeks flavoured with bell peppers

The sauce : chicken with lemon tree leaf

90 €

Pictures from the website/menu of Ritz Paris

Hook and Line Fishery

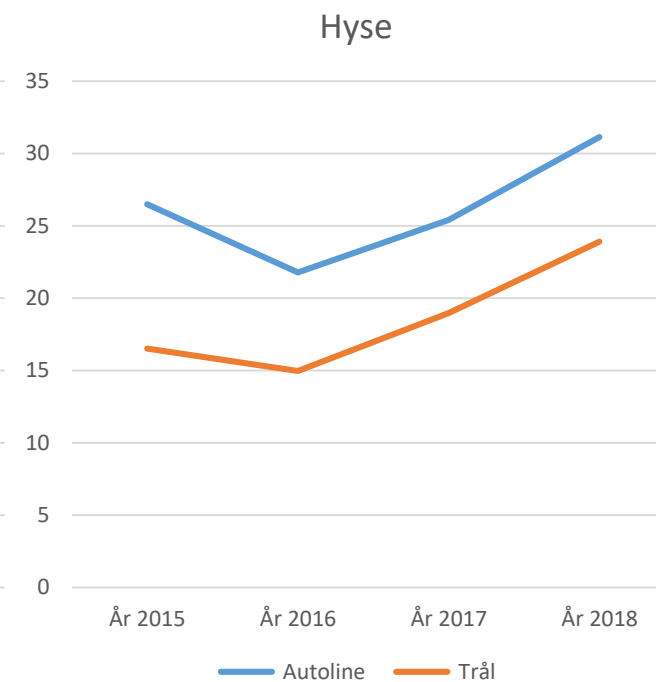
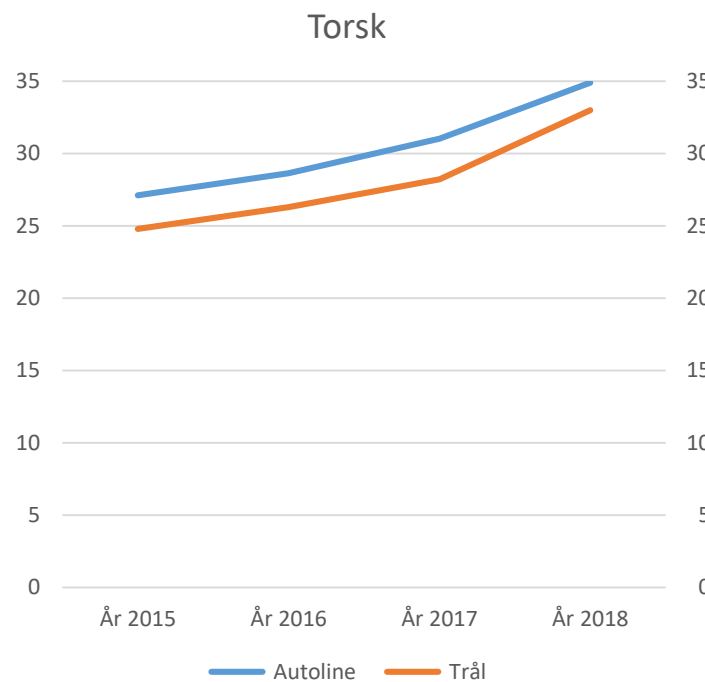
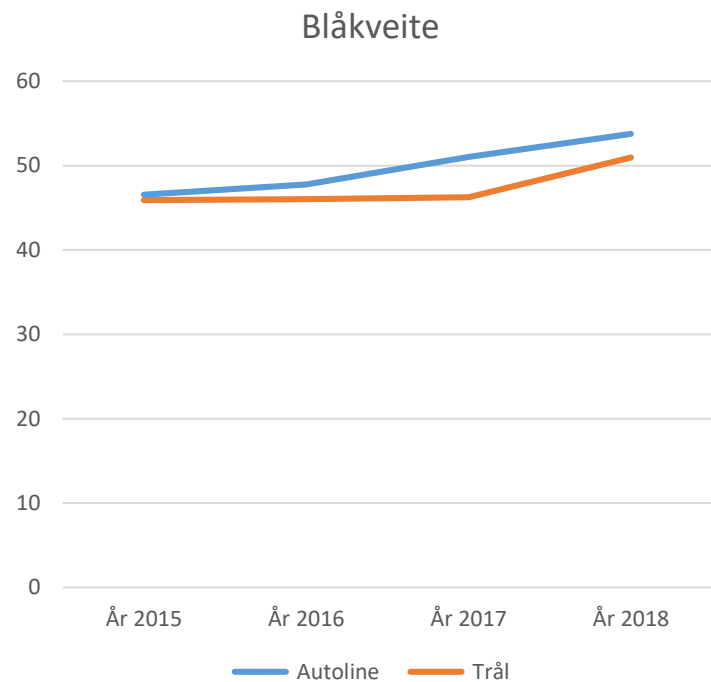


CHILEAN SEA BASS
 Fresh, hook and line caught sea bass, dusted in arrowroot and flash fried, topped with strawberries and crispy leeks, served with a spicy sweet and sour sauce 37.95
 Claiborne and Churchill, Dry Riesling, Edna Valley (NBG)

The Roustabout
 Fresh line-caught wild Alaskan cod lightly breaded right here at Mill 109 and fried until crispy. Served with lettuce, pickle, tomato, and tartar on a bun. 16



Prisdifferanser mellom redskapsgrupper





Mechanization,
steam and
water power



Mass production
and
electricity



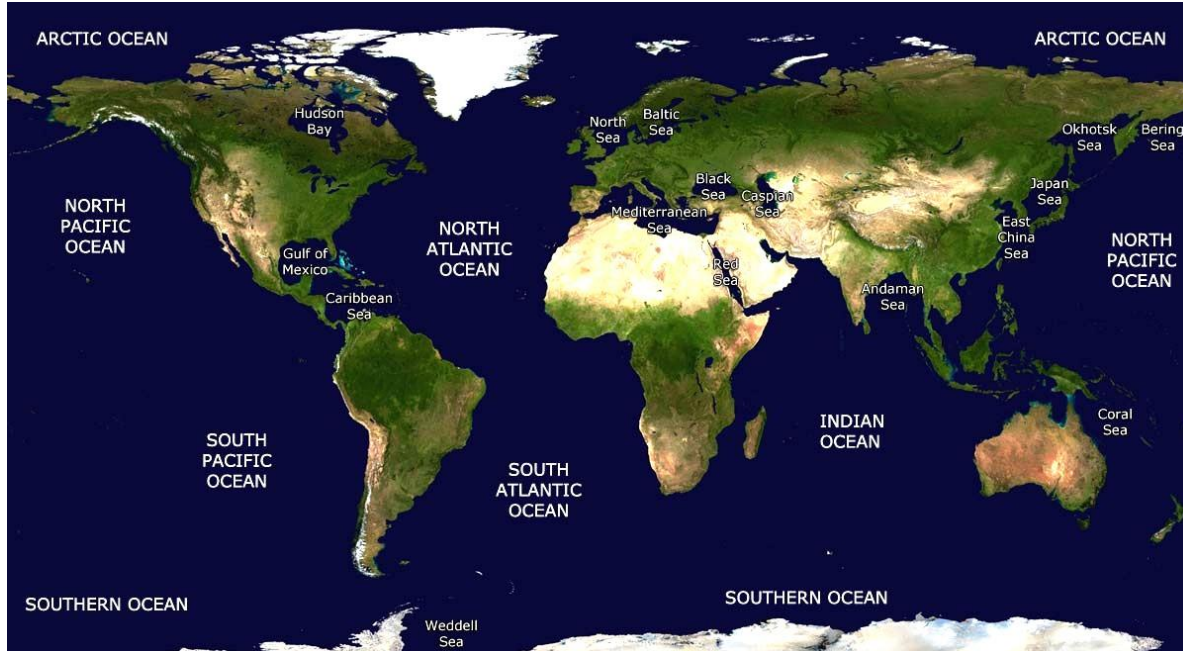
Electronic and IT
systems,
automation



Cyber physical
systems



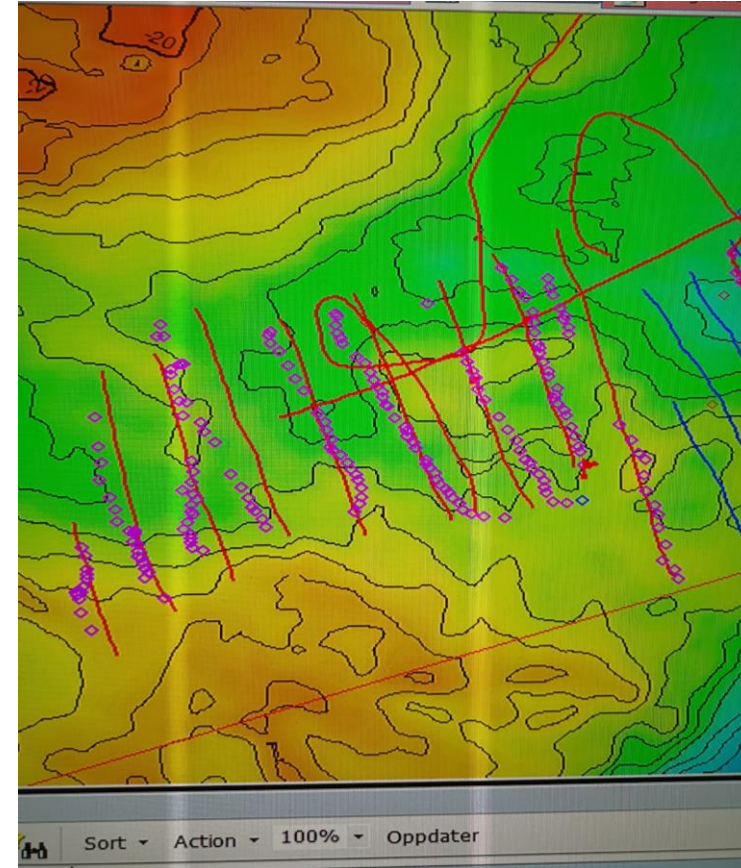
Digital Infrastruktur på havet



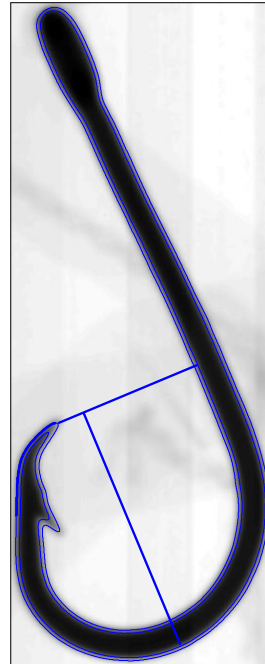
- Er det god business å legge til rette for Industri 4.0 med tilhørende internettbehov til havs?
- 71 % av verden er dekket av hav
- 1,5 millioner sjøfolk jobber der daglig (IMO)

Beslutningsstøtte

- “Geo-tagging” av fangst
- Sammenstille eksterne faktorer
- Analysere sammenhenger



Krokinspeksjon



Current: OK



Last damage: Tip

Hooks inspected:
21 810

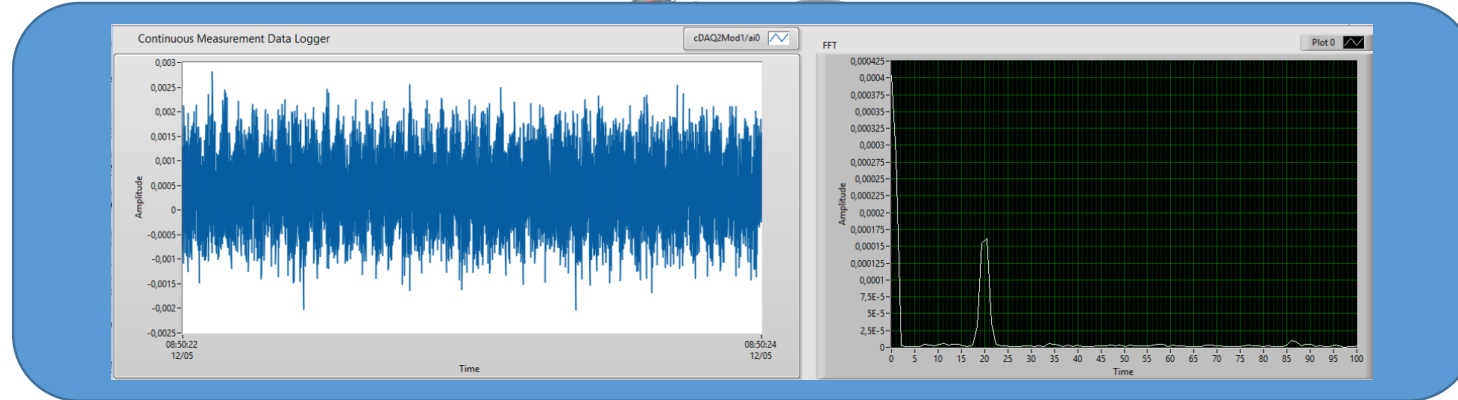
Lost hooks: 3%
Damaged hooks:
10%

Damage types:
Shape 51%
Tip 24%
Broken 5%
Other 20%

Maintenance

Spare parts

Order parts



Component	Status	Next service
SuperBaiter		12 hours
Magazine		3 days
Splitter		4 days
Hook inspector		1 week
Hook cleaner		1 week
Hauler		2 weeks

Part #	Part	Status	Next service
24818	PÆRE HALOGEN 24V 10W		12 hours
23723	DISPLAY DIGITAL EL.SKAP SUPERB		4 days
24558	SERVO KONTROLLER KORT BB		1 week
30821	INDUKTIV GIVER MITO		1 week
36681	Synchron-Servomotor		2 weeks

Maintenance

Spare parts

Order parts

Component:

SuperBaiter



Part #	Part description	Available	Unit
36681	Synchron-Servomotor Superbaite	1,00	PCS
23747	BRYTER NØDSTOPP EL.SKAP SUP.BA	1,00	PCS
23759	SIKRING EL.SKAP SUPERBAITER	10,00	PCS
23780	SIKRING EL.SKAP SUPERBAITER	3,00	PCS
25583	SIKRING GLASS 5*20MM 0.5A TREG	10,00	PCS
30821	INDUKTIV GIVER M18	4,00	PCS
30745	SENSORKABEL 5M M12 PLUGG 90GR	2,00	PCS
23490	POWER MODULE 25A EM-SUP	1,00	PCS
23498	STRØMFORSYNING 230V-24VDC/2.5A	1,00	PCS
24818	PÆRE HALOGEN 24V 10W	1,00	PCS
23723	DISPLAY DIGITAL EL.SKAP SUPERB	1,00	PCS
24558	SERVO KONTROLLER KORT BB	1,00	PCS